

Athlete Leadership in Sport Team: Review and Future Directions

Moe Machida & Todd Loughead

Athlete Leadership

Interactional process

Significant influence on team

Common goal



Characteristics

Consequences

Development





Review Initiation



Review Questions & Methodology

Configurative Systematic Review

Synthesis



Using Reviews

Gough et al., 2011

Included

Empirical
Sport
Characteristics
Consequences
Development
Peer-reviewed
English

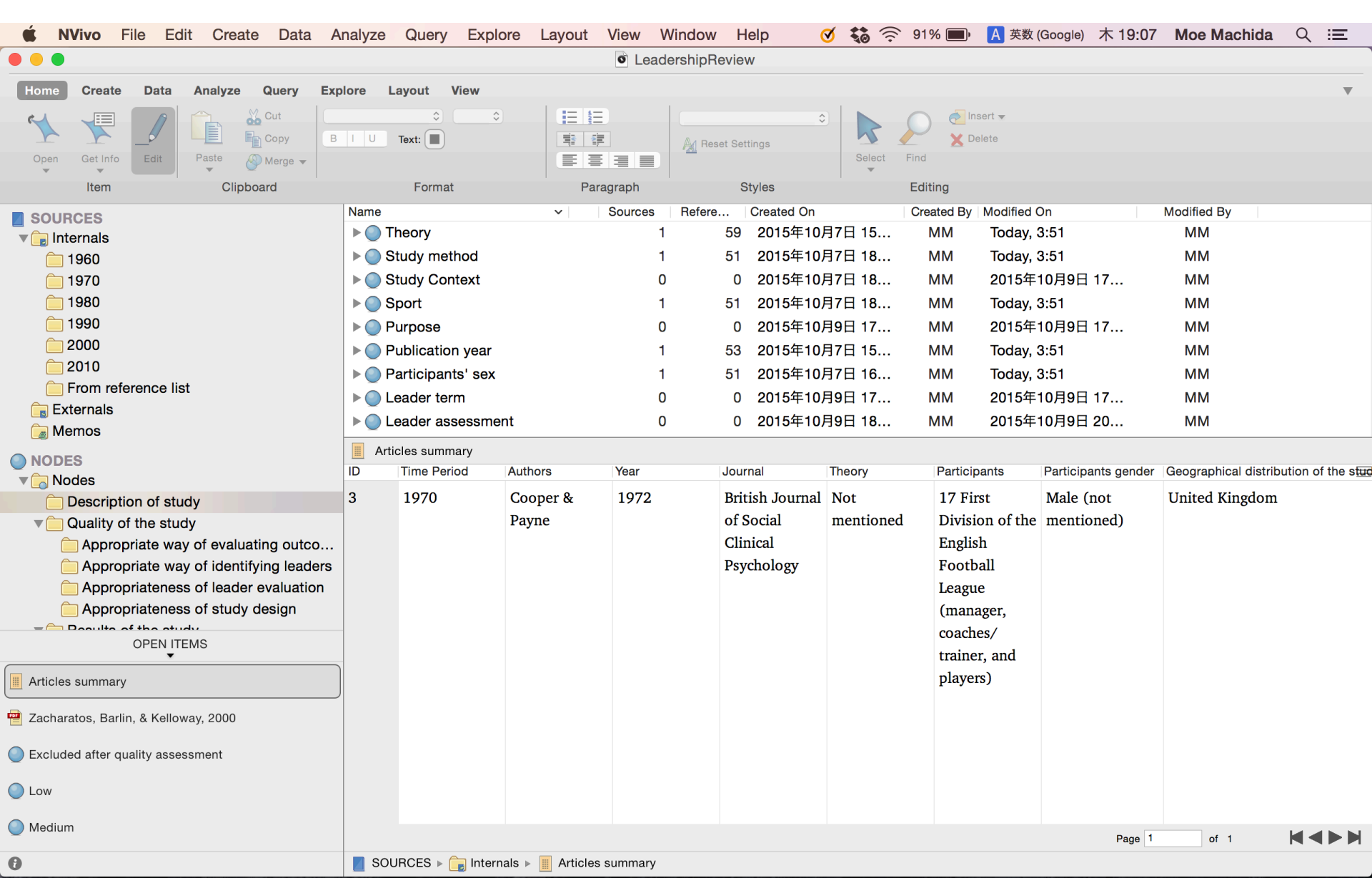
Excluded

Review
Other leaders
Outside sport
Life skills
Role model
Personality

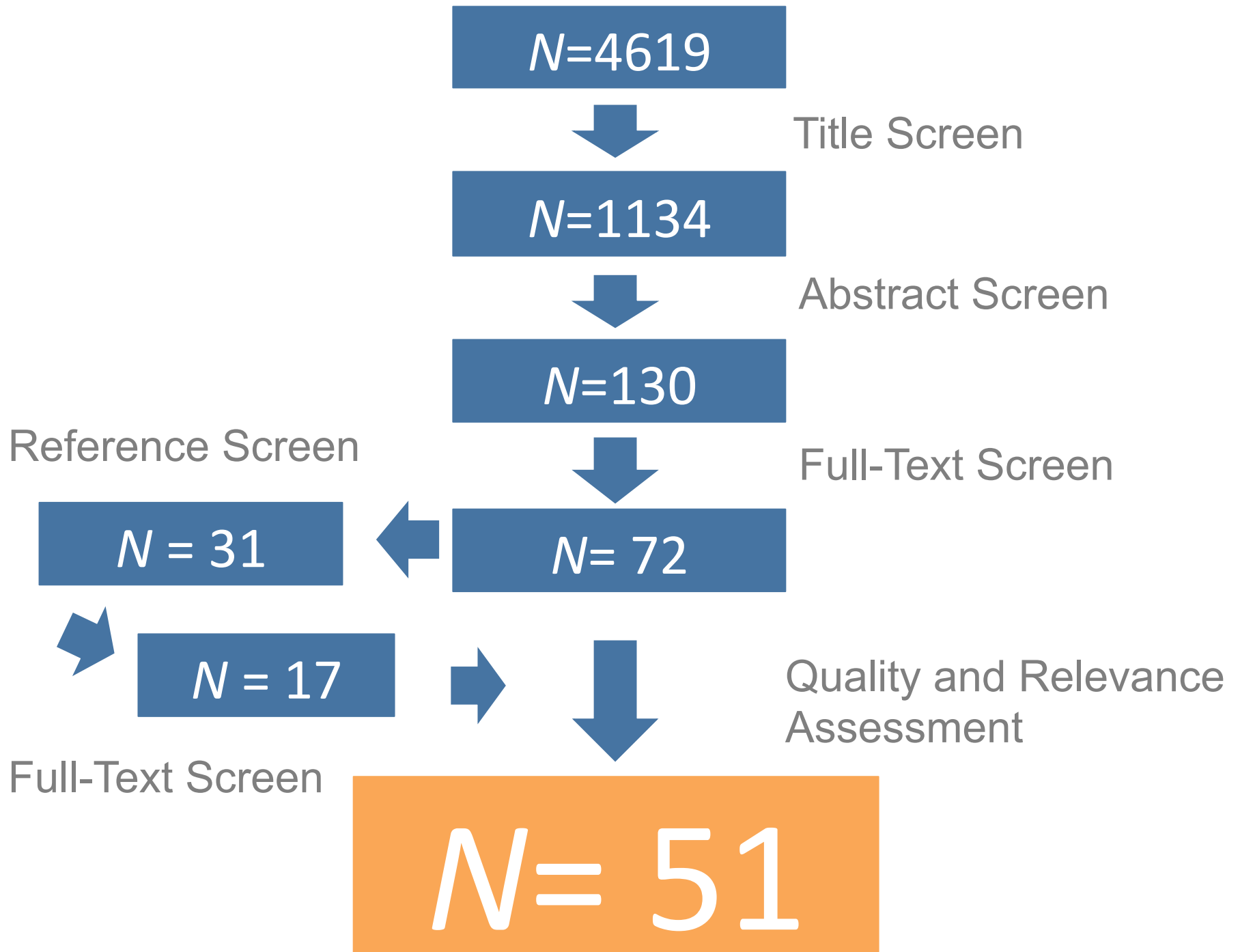
leadership or leader, and sport
leadership or leader, and athlete

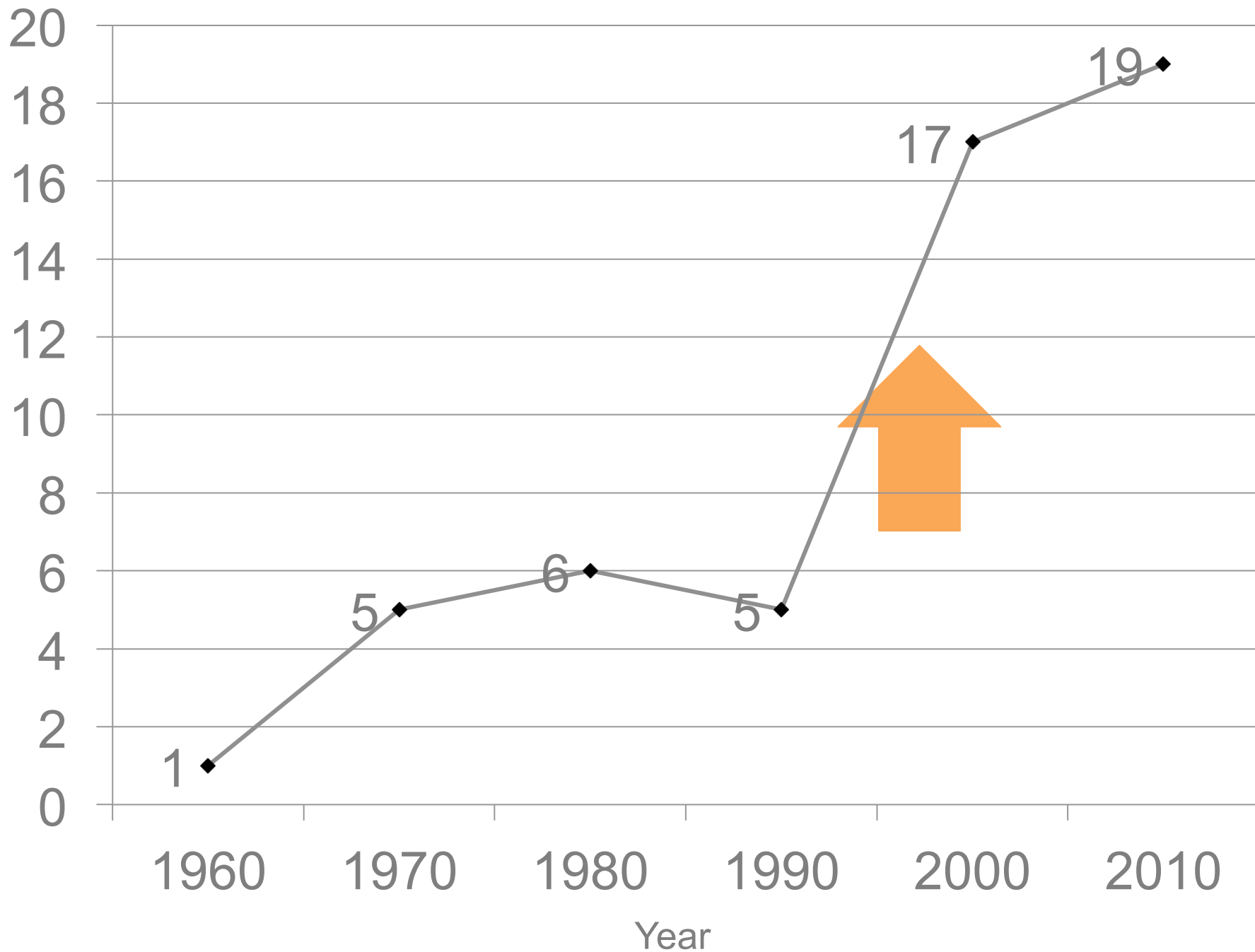
PsychInfo
SportDiscus
 $N = 4619$





NVivo 10.2.2 for Mac





Country

Context

US ($n=40$)

College ($n=34$)

Canada ($n=13$)

HS ($n = 14$)

UK ($n=5$)

Pro ($n=12$)



Female

Male

Both

8

14

25

Mostly **TEAM** sport ($n = 41$)



Quantitative

Qualitative

Both

36

12

3



Experimental

2



Theory of **Formal Structure** (4)

Grusky, 1965

Role Differentiation Theory (5)

Bales, 1965; Slater, 1964

Multidimensional Model (5)

Chelladurai, 1980

Transformational

Leadership (5)

Avolio, 1998; Bass, 1985

Athlete Leader **Function** (6)

Hills, 2001; Loughhead et al. 2006

NO Theory (17)



Results & Discussion



Ability (16)

Centrality (10)

Experience (9)

Positive (4)

Work Ethics (4)

Controlling Emotions (3)



Team Management (19)

Communication (14)

Building Rapport (6)

Motivating (6)

Trust and Respect (5)

CHARACTERISTICS

SKILLS & BEHAVIORS



Team Cohesion (11)

Team Confidence (9)

CONSEQUENCES

Satisfaction (6)

Team Performance (4)



Coaches (9)

Parents (2)

Peers (2)

DEVELOPMENT

Learning Beliefs (2)

Opportunities & Experiences (2)



Communication (3) Conflict (2)

MEDIATORS

Cohesion (2)

MODERATORS

Leader Confidence (1)

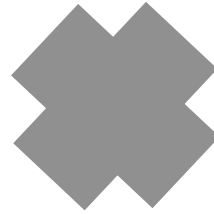
Skill Levels (1)

Previous team

Performance (1)



**Developmental
Factors**



**Personal
Characteristics**

**Skills &
Behaviors**

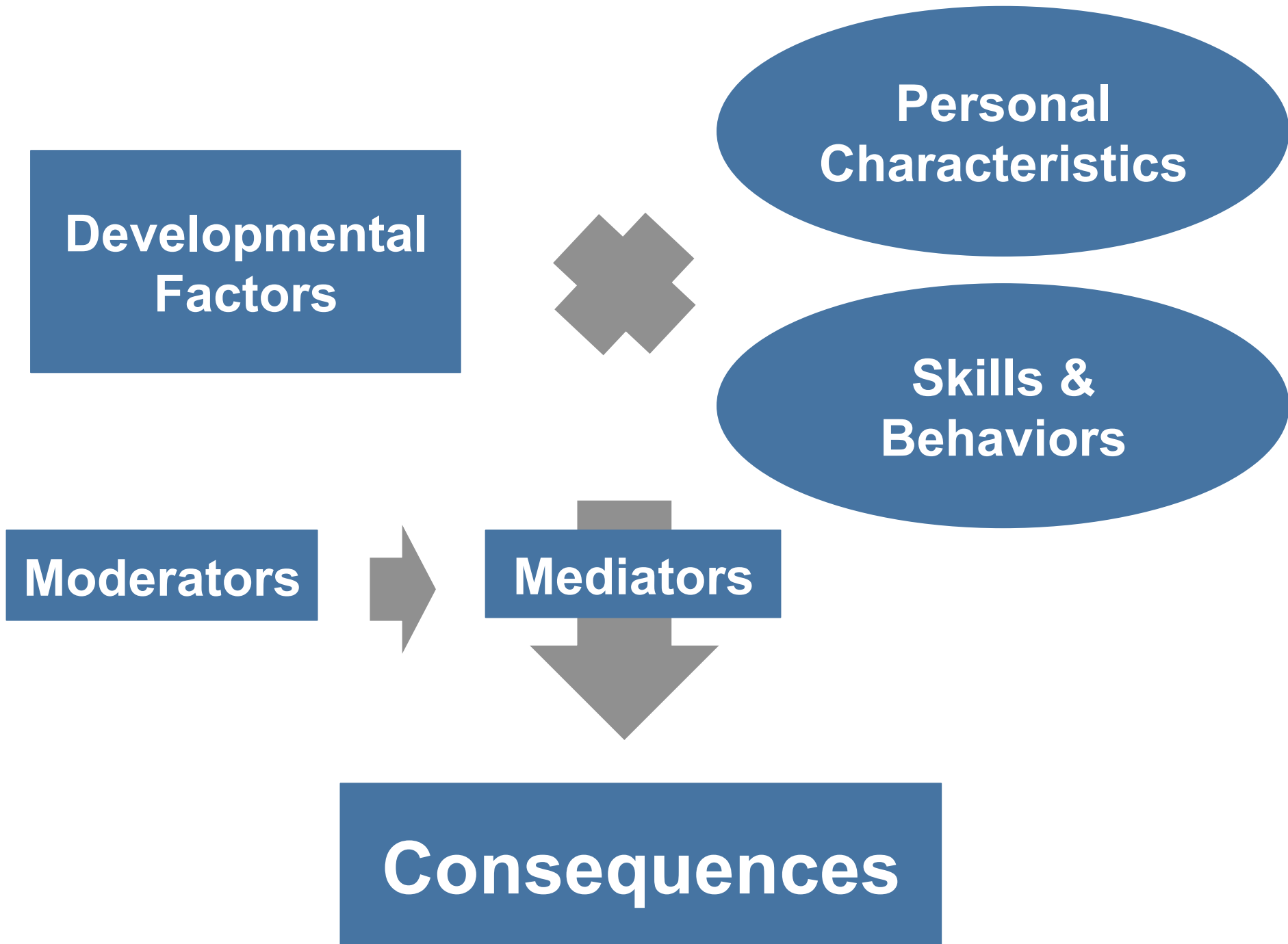
Moderators



Mediators



Consequences





Consequences & Development

PROCESS



Investigating **BAD** leadership



Situations



LEADER vs.

LEADERSHIP



Demographics ↑

Methodology

THEORY



Feedback and Comments

Moe Machida, Ph.D.
Osaka University of
Health and Sport Sciences
machidam@ouhs.ac.jp

